



**1840/VIV**

**CASARES COSTA DEL SOL**





# CASARES COSTA

Discover a magical place on the Costa del Sol where you can feel the purest and most sincere embrace of the Mediterranean.

Homes include ground floors with gardens and rear terraces, apartments with spacious terraces, and penthouses with sea views and private jacuzzis. All residences feature large terraces, a parking space, and a storage room.

The southeast orientation of the residential complex not only provides abundant natural light for much of the day but also ensures a mild climate in winter.

You will have the opportunity to enjoy outdoor dinners, family gatherings, and moments of relaxation on your private terrace all year round as the sun slowly sets over the sea.

The feeling of spaciousness and brightness takes over every space.





The interior of the home features high-end materials known for their exceptional durability and versatility, along with a combination of other exclusive details that will transform your residence into a luxury home: selection of top brands, underfloor heating in the master bathroom, a designer kitchen equipped with modern appliances, and an innovative thermal and acoustic insulation system. This will make your home a sanctuary of tranquility and comfort, shielded from any external noise and maintaining a cool temperature in summer and warmth in winter.

For hot water production, the home is equipped with a state-of-the-art aerothermal system that significantly reduces energy consumption

**Two-bedroom apartments starting from 67 m<sup>2</sup> with a 20.57 m<sup>2</sup> terrace, priced from €307,500 to €355,500.**

**Three-bedroom penthouses starting from 92.71 m<sup>2</sup> with a 95.60 m<sup>2</sup> terrace, priced between €620,000 and €630,000**









# FEATURES

- Aerothermal system
- Air conditioning
- Wardrobes
- Elevator
- Heating
- Equipped kitchen
- Shower
- Appliances
- Extractor fan
- Garage
- Gym
- Stoneware/Ceramic flooring
- Oven
- Washing machine
- Dishwasher
- Microwave
- Refrigerator
- Unfurnished
- Community pool
- Underfloor heating
- En-suite bathroom
- Terrace
- Storage room
- Mountain views
- Sea views
- Ceramic hob
- Community area
- Children's area







## LOCATION

Located on the tranquil coast of Casares, this residential area offers serenity by the Mediterranean Sea and pleasant weather for most of the year. Just a few minutes away is Estepona, a vibrant city with all essential services and leisure options. The area is well-connected by the A-7 highway, providing easy access to Estepona, Puerto Banús, Marbella, and Málaga







## LOCATION



Situated between Marbella and Sotogrande, next to Estepona, this complex enjoys a privileged location on the Costa del Sol, inviting you to partake in Mediterranean life and the characteristic joy of southern Spain.

A new golf course and an extensive commercial area are planned for this region. Both Cádiz and Málaga are just an hour away via the highway.



## COMMON AREAS

In our coworking/gourmet space, you can work comfortably or organize an event or meeting, while the fitness area allows you to stay in shape. Meanwhile, the little ones have their own entertainment area in the children's playground.

You will have the opportunity to enjoy magical and charming places every day, such as Casares, one of the most beautiful villages on the Costa del Sol. Nestled on a mountain, this beautiful town in Málaga boasts some of the most stunning views of the Mediterranean Sea.

The light of the Mediterranean floods every corner of this luxurious residential complex, creating a warm and welcoming atmosphere that makes you feel in harmony with the sea and nature. The residential area is a tribute to contemporary architecture, with a sophisticated design that blends perfectly with the surroundings to create intelligent spaces. These spaces maximize natural light, reducing the need for artificial lighting and allowing you to live more sustainably





The residential complex features a heated pool and two stunning designer pools with night lighting, inviting you to relax and refresh under the warm Mediterranean sun. This area is surrounded by spacious landscaped gardens, where residents can rest, stroll, and enjoy a pleasant and tranquil environment.





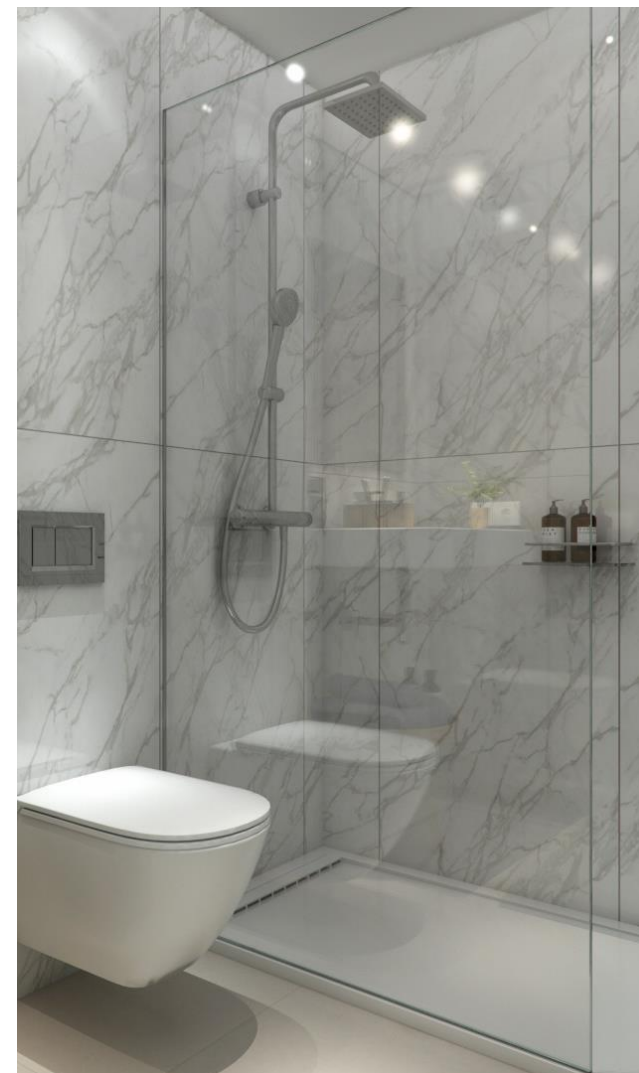






# BATHROOM

In light stoneware with a minimalist design.





# ESPACIOS ÚNICOS



The minimalist  
kitchen full  
equipated







Large windows connect the interior and exterior spaces with the beauty of the surroundings.



allowing natural light to flow unrestricted

Luxury in details

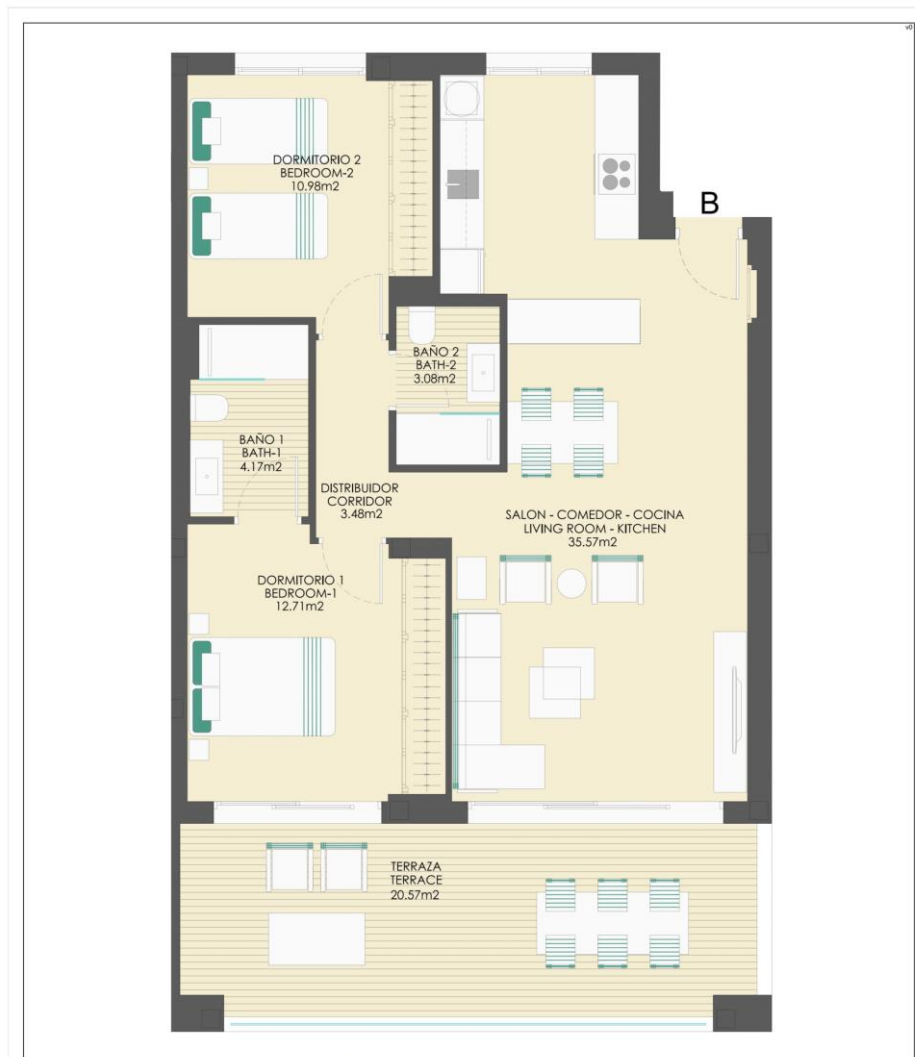


# TERRAZAS

Spacious terraces to  
enjoy every moment  
with the utmost  
privacy







Bloque 3  
Planta 1  
Vivienda B

TOTAL SUP. ÚTIL / LIVING AREA: 90,56 m²  
Superficie útil vivienda / Property: 69,99 m²  
Superficie útil terraza cubierta / terrace\_covered: 20,57 m²  
Superficie útil terraza descubierta / terrace\_uncovered: 0,00 m²

TOTAL SUP. CONSTRUIDA C.T. / BUILD AREA I.I.: 122,80 m²

R.DECRETO 218/2005 JDA  
Superficie útil / Property: 76,99 m²



0 1 2 3

PLANOS COMERCIALES: Superficies, medidas, configuración, bloques y plantas, son los previstos, sujetos a posibles modificaciones por razones técnicas, jurídicas o comerciales. No se incluye en el precio ni bienes muebles, ni elementos de jardinería.  
COMMERCIAL FLOOR PLANS: Areas, measurements, room distribution, boundaries and others may be subject to changes due to technical, legal or commercial reason. Furniture and gardening elements are not included.



Bloque 3  
Planta 4  
Vivienda A

TOTAL SUP. ÚTIL / LIVING AREA: 158,41 m²  
Superficie útil vivienda / Property: 92,71 m²  
Superficie útil terraza cubierta / terrace\_covered: 0,00 m²  
Superficie útil terraza descubierta / terrace\_uncovered: 65,70 m²

TOTAL SUP. CONSTRUIDA C.T. / BUILD AREA I.I.: 134,27 m²

R.DECRETO 218/2005 JDA  
Superficie útil / Property: 101,98 m²



0 1 2 3

PLANOS COMERCIALES: Superficies, medidas, configuración, bloques y plantas, son los previstos, sujetos a posibles modificaciones por razones técnicas, jurídicas o comerciales. No se incluye en el precio ni bienes muebles, ni elementos de jardinería.  
COMMERCIAL FLOOR PLANS: Areas, measurements, room distribution, boundaries and others may be subject to changes due to technical, legal or commercial reason. Furniture and gardening elements are not included.



Bloque  
3

Planta  
4

Vivienda  
B



**arrecife**  
by urbincasa

TOTAL SUP. ÚTIL / LIVING AREA: 153,03 m<sup>2</sup>  
Superficie útil vivienda / Property: 93,02 m<sup>2</sup>  
Superficie útil terraza cubierta / terrace\_covered: 0,00 m<sup>2</sup>  
Superficie útil terraza descubierta / terrace\_uncovered: 60,01 m<sup>2</sup>

TOTAL SUP. CONSTRUIDA C.T. / BUILD AREA L.I.: 134,26 m<sup>2</sup>

R.DECRETO 218/2005 JDA

Superficie útil / Property: 102,32 m<sup>2</sup>



PLANOS COMERCIALES: Superficies, medidas, configuración, bridas y demás, son las previstas, según se pudiesen modificar por exigencias técnicas, jurídicas o comerciales. No se indican en el precio ni bienes muebles, ni elementos de jardinería, COMERCIO, FLOOR PLANS: Areas, measurements, room distribution, boundaries and others may be subject to change due to technical, legal or commercial reasons. Furniture and gardening elements are not included.



Bloque  
3

Planta  
0

Vivienda  
D



TOTAL SUP. ÚTIL / LIVING AREA: 147,65 m<sup>2</sup>  
Superficie útil vivienda / Property: 70,33 m<sup>2</sup>  
Superficie útil terraza cubierta / terrace\_covered: 21,44 m<sup>2</sup>  
Superficie útil terraza descubierta / terrace\_uncovered: 26,32 m<sup>2</sup>  
Superficie útil jardín / garden: 29,56 m<sup>2</sup>

TOTAL SUP. CONSTRUIDA C.T. / BUILD AREA L.I.: 122,88 m<sup>2</sup>

R.DECRETO 218/2005 JDA

Superficie útil / Property: 77,36 m<sup>2</sup>



PLANOS COMERCIALES: Superficies, medidas, configuración, bridas y demás, son las previstas, según se pudiesen modificar por exigencias técnicas, jurídicas o comerciales. No se indican en el precio ni bienes muebles, ni elementos de jardinería, COMERCIO, FLOOR PLANS: Areas, measurements, room distribution, boundaries and others may be subject to change due to technical, legal or commercial reasons. Furniture and gardening elements are not included.





**ARE YOU INTERESTED?**

[info@abiagroup.es](mailto:info@abiagroup.es)

[www.abiagroup.es](http://www.abiagroup.es)